



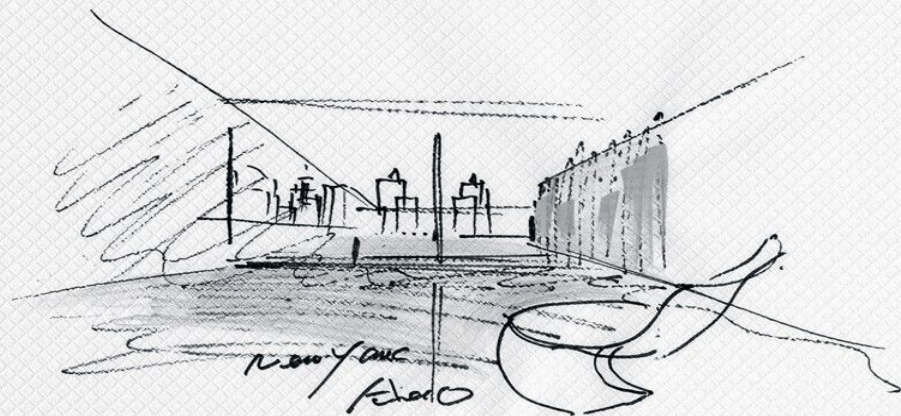
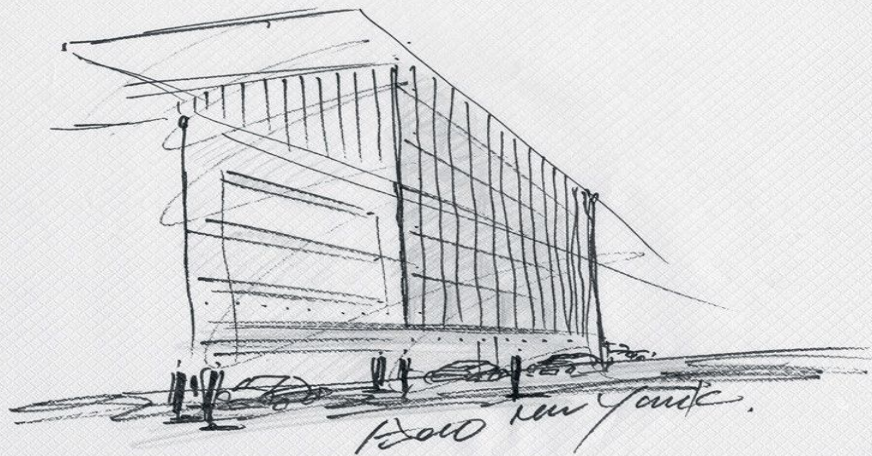
# Downtown Corner Site Precedent Project

Michael Drinovac  
Fall 2021  
ARC 486 Architectural Design V  
Professor LoPiccolo

# 152 Elizabeth Street

Date Built: 2018  
Architect: Tadao Ando  
Location: New York, NY  
Use: Residential (Condominiums)

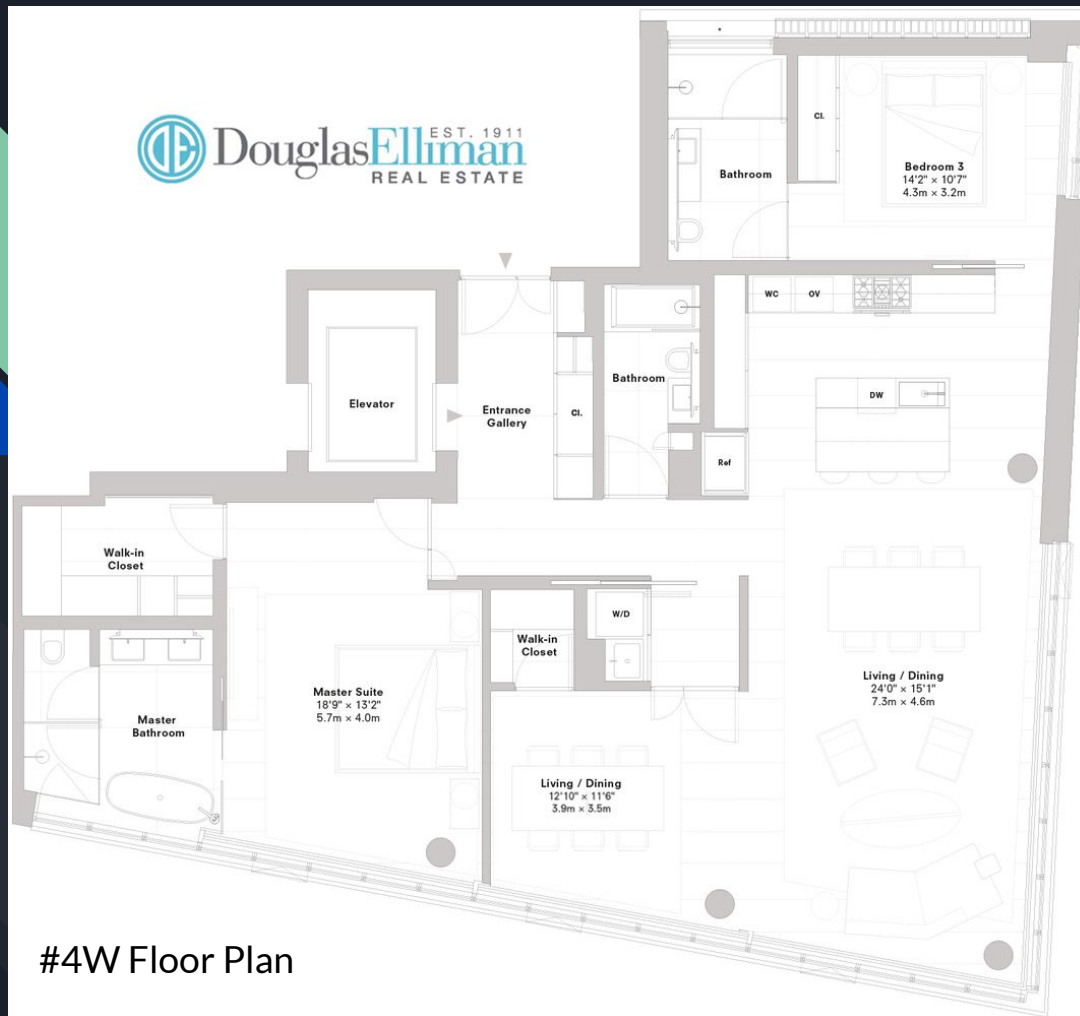








#3E Floor Plan



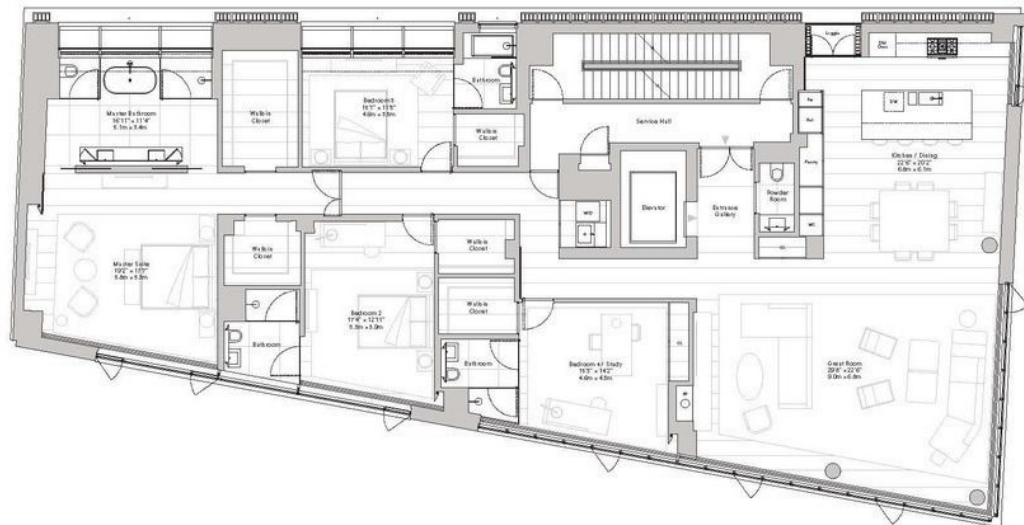
#4W Floor Plan

152  
Elizabeth  
Taddeo  
Ando

Residence 5  
Level 5

Four Bedrooms  
Four Bathrooms  
One Powder Room

Total Area:  
4,094 ft<sup>2</sup> / 380 m<sup>2</sup>



## 5 Floor Plan



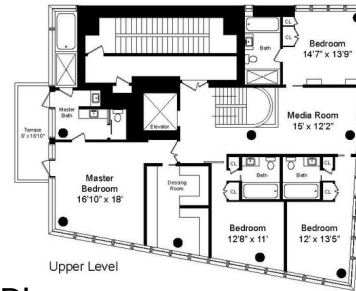
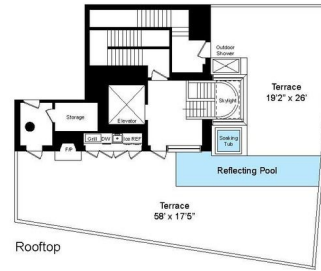
Kenmare St

Elizabeth St

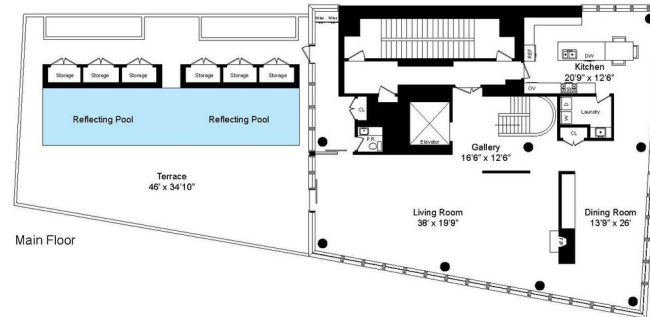
All computer and/or artist renderings reflect the planned scale and spirit of the Building. All depictions of the condominium units and property, including without limitation any interior or exterior furniture, equipment, decorations, finishes, fixtures, appliances, furnishings, and landscaping, are for illustrative purposes only. Sponsor makes no representation or warranty as to the accuracy of the information presented in this Offering Plan. Where materials, appliances, equipment, fixtures, and/or other construction design details are specified herein, Sponsor reserves the right to substitute materials or equipment of comparable or better quality as recognized by industry standards for performance, efficiency, longevity, and/or classifications, as applicable, in accordance with the terms of the Offering Plan. All square footages and dimensions are approximate and subject to normal construction variances and tolerances. Square footage exceeds the usable floor area. The complete offering terms are in the offering plan available from Sponsor. File No. CD14-0348. Sponsor: 152 Elizabeth Development LLC, 520 West 27th Street, Ste. 302, New York, New York 10001. Equal Housing Opportunity. \*Lot line windows.

Sales Gallery: 165 Elizabeth Street New York NY 10012 T (212) 913 9078 E info@152elizabethet.com www.152elizabethet.com

# 152 Elizabeth Street Penthouse



## Penthouse Floor Plans





NORTH ELEVATION

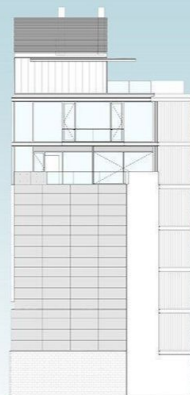


152 Elizabeth Street  
New York, New York

SOUTH ELEVATION



152 Elizabeth Street  
New York, New York



EAST ELEVATION



152 Elizabeth Street  
New York, New York

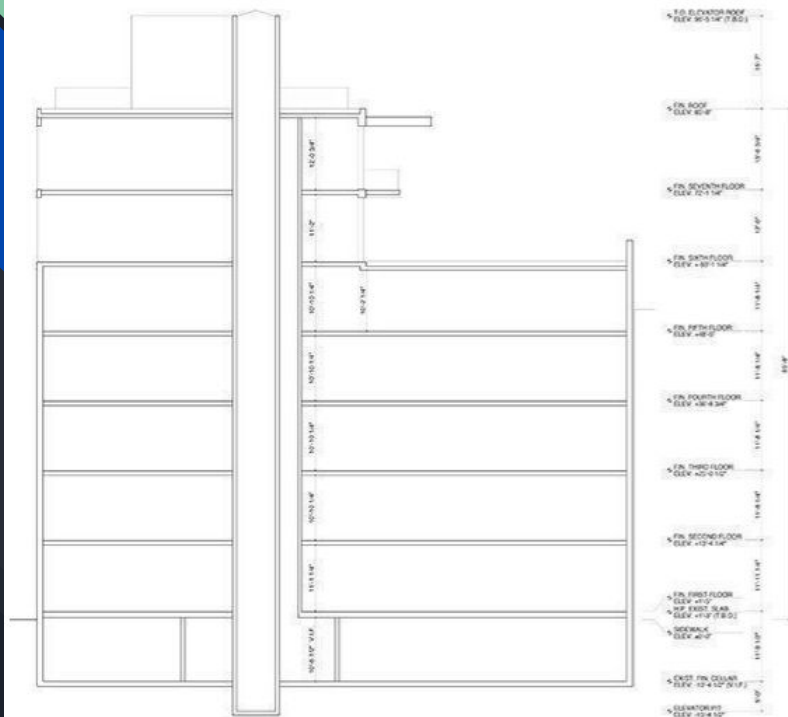


WEST ELEVATION

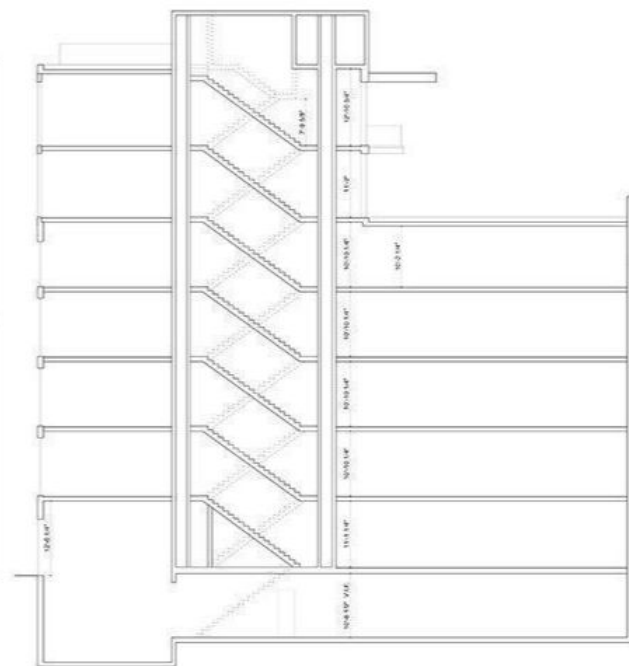


152 Elizabeth Street  
New York, New York





1 BUILDING SECTION  
SCALE: 1/8"=1'-0"

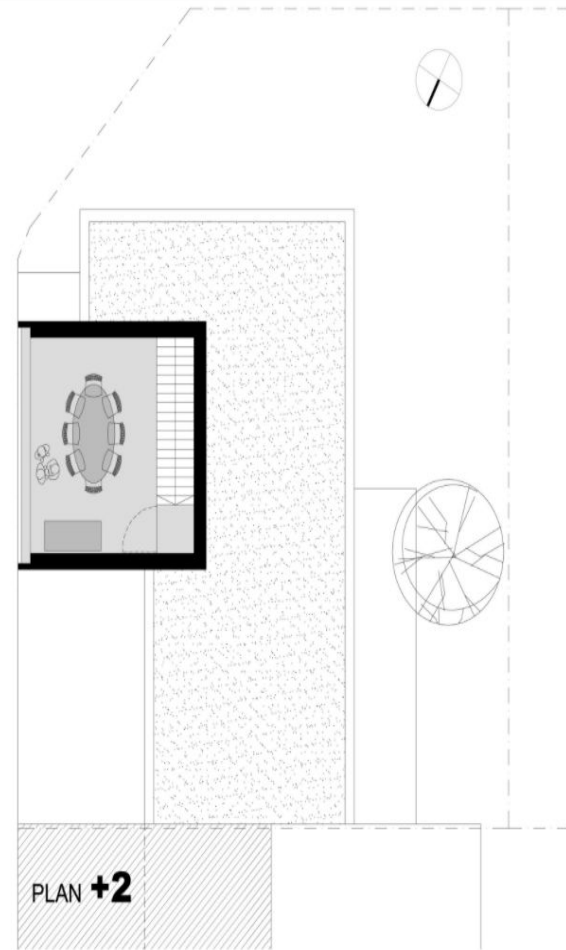
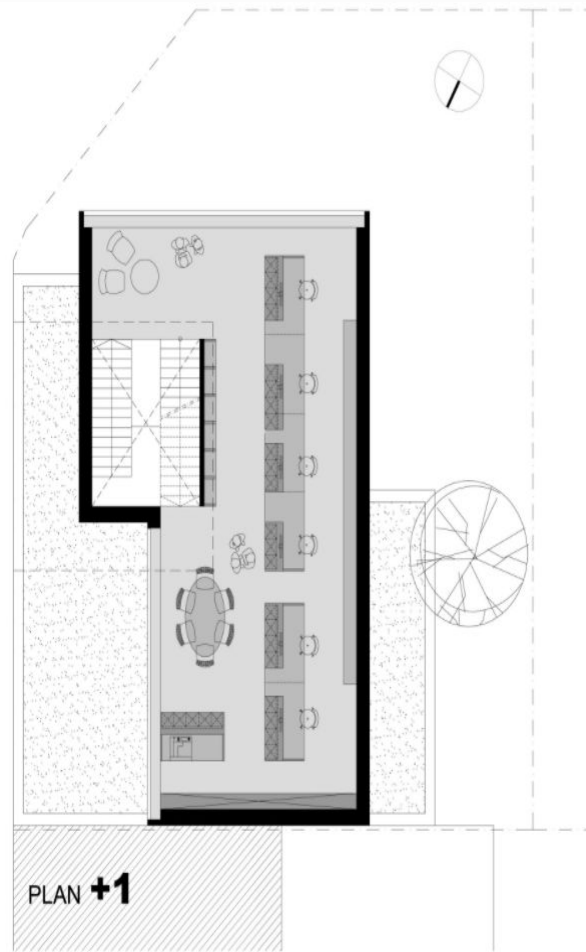
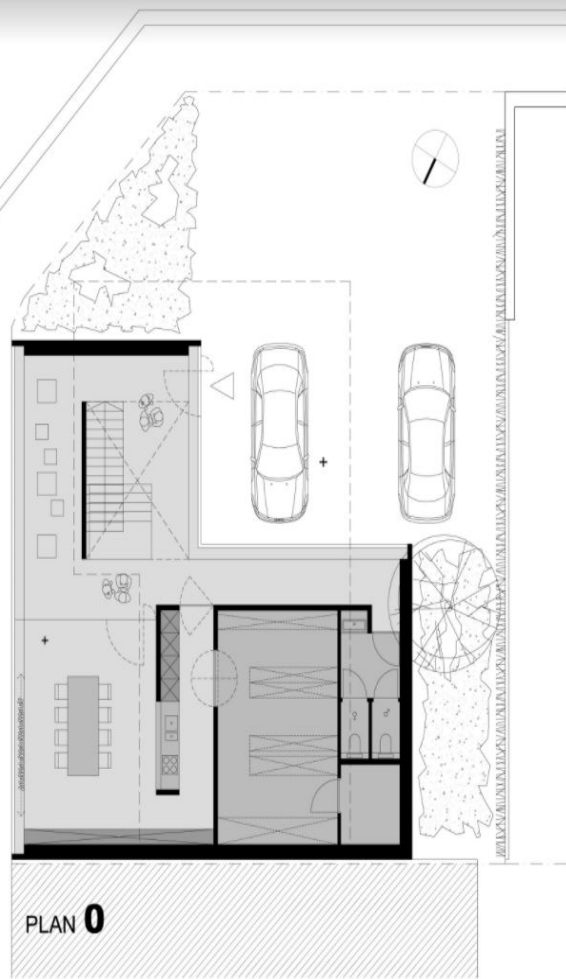


2 BUILDING SECTION  
SCALE: 1/8"=1'-0"

# Hectaar Office Building

Date Built: 2014  
Architect: CAAN Architecten  
Location: Roeselare, Belgium  
Use: Offices









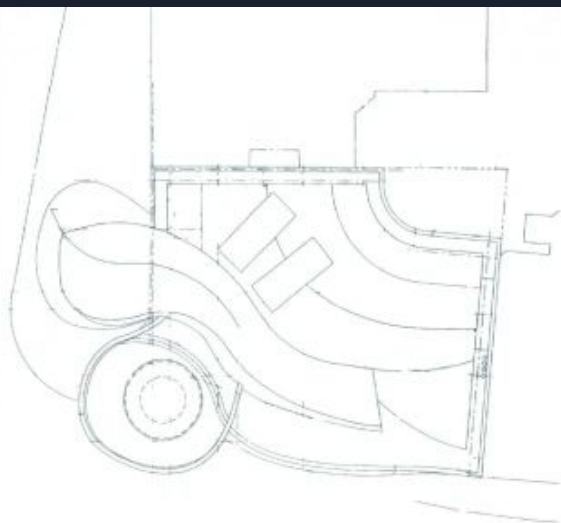
# Dancing House

Date Built: 1996  
Architect: Frank Gehry  
Location: Prague, Czech Republic  
Use: Hotel

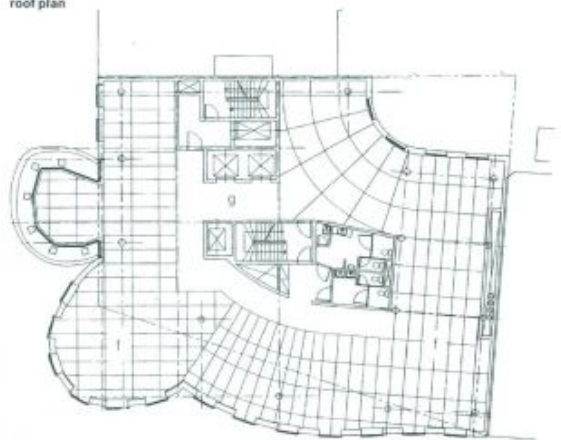




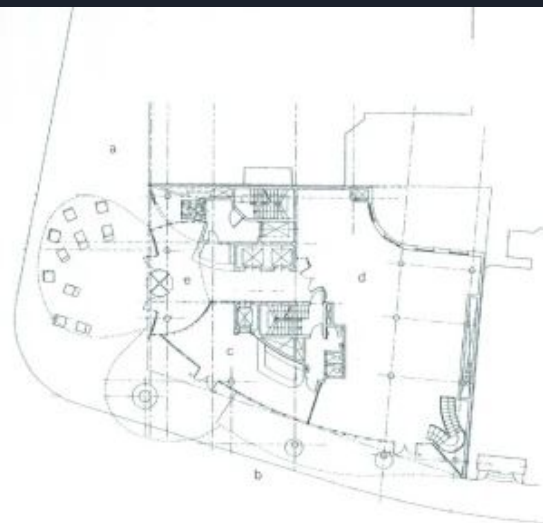




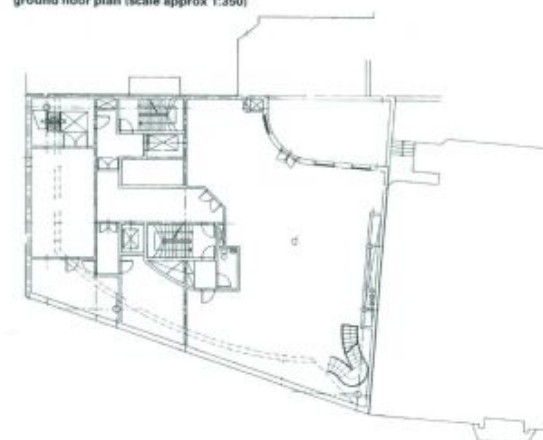
roof plan



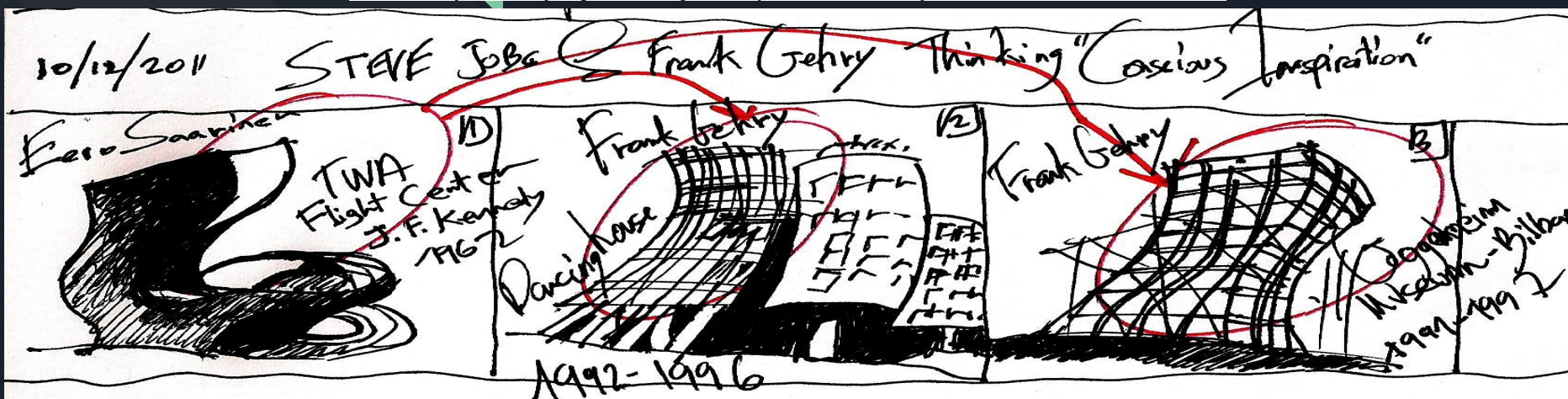
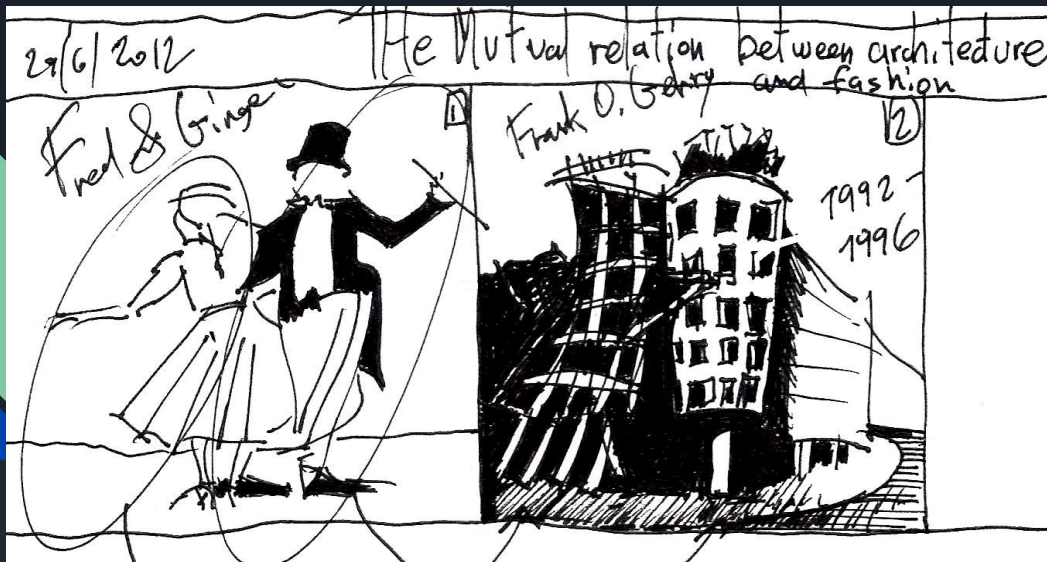
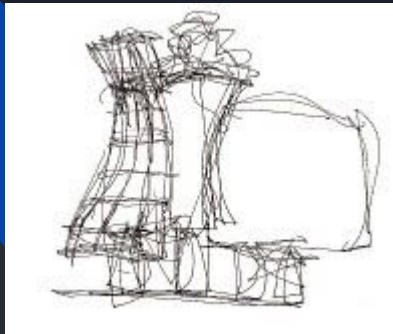
typical office floor



ground floor plan (scale approx 1:350)



lower ground floor plan





Hum3D



Hum3D

